

Appendix A

Horsetooth Mountain & Red Mountain Open Spaces Surveys



This survey will help Larimer County Department of Natural Resources staff better understand visitors' views and improve service delivery. Your participation is completely voluntary and your answers will remain anonymous. **Thank you for your assistance—your input is greatly appreciated!**



TODAY'S VISIT

1. About how many visits have you made to **Horsetooth Mountain Open Space** in the past 12 months? *(If this is your first visit or you come here less than once per year, write 0.)* _____
2. Which activities have you participated in **TODAY** during your visit to Horsetooth Mountain Open Space? *(Check all that apply.)*
 ___ Hiking ___ Trail running ___ Picnicking ___ Rock climbing
 ___ Mountain biking ___ Family gathering ___ Photography/Art ___ Backcountry camping
 ___ Walking dog(s) ___ Horseback riding ___ Wildlife viewing ___ Other: _____
3. Above, **CIRCLE** the **PRIMARY ACTIVITY** for **TODAY**.
4. Which of the following best describes **WHO** traveled here today? *(Check one, and write in the number of people in your group, if more than just you today.)*
 ___ Just me! ___ Group (___ # adults, ___ # children)
5. How did you get to **Horsetooth Mountain Open Space** today? *(Check one.)*
 ___ Vehicle ___ Dropped-off ___ Bicycle ___ Horseback ___ Run/Walk ___ Other: _____
6. In the past 12 months, have you ever been **turned away** from this property because parking was FULL?
 ___ Yes ___ No

7. Did you check conditions for **Horsetooth Mountain Open Space** before you came out **TODAY**?
 ___ Yes ___ No
 If yes, check all that apply: ___ NoCo Trail Report ___ Trailhead Webcam ___ Social Media ___ Website

8. For the facilities that you used today during your visit, please rate their quality by circling the appropriate number for each facility.

	Did Not Use	Very Poor	Poor	Average	Good	Very Good
Restrooms	0	1	2	3	4	5
Parking Areas	0	1	2	3	4	5
Drinking Fountains	0	1	2	3	4	5
Picnic Areas	0	1	2	3	4	5
Trash Receptacles	0	1	2	3	4	5
Kiosk Information	0	1	2	3	4	5
Trails	0	1	2	3	4	5

Please explain why you rated the facilities this way: _____

9. How would you rate your overall experience at **Horsetooth Mountain Open Space**? *(Circle one number.)*
 Poor _____ Neutral _____ Excellent _____
 1 _____ 2 _____ 3 _____ 4 _____ 5 _____

Please explain why you rated it this way: _____

LARIMER COUNTY NATURAL RESOURCES PROPERTIES

10. Over the past 12 months, how many times have you visited other Larimer County Natural Resources properties? *(Write a number next to each space; if less than once per year, write 0.)*
 ___ Carter Lake ___ Devil's Backbone Open Space ___ Ramsay-Shockey Open Space
 ___ Flatiron Reservoir ___ Eagle's Nest Open Space ___ Red Mountain Open Space
 ___ Horsetooth Reservoir ___ Hermit Park Open Space ___ River Bluffs Open Space
 ___ Pinewood Reservoir ___ Lions Open Space
11. Why did you choose to come out to **Horsetooth Mountain Open Space** today? *(Check all that apply.)*
 ___ Location ___ Family time ___ Exercise ___ Nature ___ Other: _____
12. Is there a particular **Larimer County Natural Resources** property that you choose to **no longer** visit? *(Check one.)* ___ Yes ___ No
 If yes, which one? _____
 Why do you avoid this property? _____

OBSERVATIONS AT HORSETOOTH MOUNTAIN OPEN SPACE

13. How often **have you witnessed each** of the following during **THIS VISIT** to Horsetooth Mountain Open Space? *(Circle one and include a description, if applicable.)*

	Never	1 or 2 times	3 to 5 times	Many times	Almost always
Witnessed hikers behaving unsafely	0	1	2	3	4
If so, how? _____					
Witnessed mountain bikers behaving unsafely	0	1	2	3	4
If so, how? _____					
Witnessed horseback riders behaving unsafely	0	1	2	3	4
If so, how? _____					
Witnessed hikers being discourteous	0	1	2	3	4
If so, how? _____					
Witnessed mountain bikers being discourteous	0	1	2	3	4
If so, how? _____					
Witnessed horseback riders being discourteous	0	1	2	3	4
If so, how? _____					

CONTINUE ON BACK ↓

14. To what extent do you think each of the following is a problem at Horsetooth Mountain Open Space?

	Never	Rarely	Sometimes	Often	Almost always
Hikers hiking unsafely	0	1	2	3	4
Mountain bikers riding unsafely	0	1	2	3	4
Horseback riders riding unsafely	0	1	2	3	4
Hikers being discourteous	0	1	2	3	4
Mountain bikers being discourteous	0	1	2	3	4
Horseback riders being discourteous	0	1	2	3	4

15. What is an acceptable number of hikers to see while you are on the trail? (Please fill in a number or check one of the other two options.)
 It is OK to see as many as _____ hikers on the trail
 _____ It does not matter to me.
 _____ It matters to me, but I cannot specify a number.

16. What is an acceptable number of mountain bikers to see while you are on the trail? (Please fill in a number or check one of the other two options.)
 It is OK to see as many as _____ mountain bikers on the trail.
 _____ It does not matter to me.
 _____ It matters to me, but I cannot specify a number.

17. To what extent do you agree or disagree with each of the following statements? (Circle one.)

	Strongly Disagree	Disagree	Neutral	Agree	Strongly Agree
There are too many large groups of mountain bikers.	1	2	3	4	5
There are too many large groups of hikers.	1	2	3	4	5
There are too many large groups of horseback riders	1	2	3	4	5
Where possible, hikers and mountain bikers should not be allowed on the same trails.	1	2	3	4	5
Where possible, mountain bikers and horses should not be allowed on the same trails.	1	2	3	4	5
Encounters with dogs interfered with my enjoyment today. If so, how? _____	1	2	3	4	5

18. Please estimate the number of each you saw TODAY at the trailhead and on the trail.

	Number seen at the trailhead	Number seen on the trail
Hikers	_____	_____
Mountain bikers	_____	_____
Horseback riders	_____	_____
Dogs	_____	_____

19. Did you feel crowded by the number of other visitors at each of the following locations? (Circle one.)

Did you feel crowded by:	Not at all Crowded	Slightly Crowded	Moderately Crowded	Extremely Crowded
Hikers	1	2	3	4
At the trailhead	1	2	3	4
On the trail	1	2	3	4
Mountain bikers	1	2	3	4
At the trailhead	1	2	3	4
On the trail	1	2	3	4

Which trails did you use today?

VISITOR DEMOGRAPHICS - Your answers will remain anonymous.

20. What is your gender? _____ Female _____ Male → 21. What is your age? _____ (Years)

22. Indicate whether or not you are of Hispanic or Latino ethnicity.

_____ Hispanic or Latino _____ Not Hispanic or Latino

23. Choose the race with which you most closely identify. (Check all that apply.)

_____ American Indian or Alaska Native _____ Black/African American _____ White
 _____ Native Hawaiian/Pacific Islander _____ Asian _____ Don't know _____ Other

24. What is your highest level of completed education?

_____ Some High School or less _____ Associate's degree _____ Master's
 _____ Graduated from High School/GED _____ Bachelor's degree _____ Professional/Doctorate

25. What is your annual household income?

_____ Less than \$24,999 _____ \$50,000 to \$74,999 _____ \$150,000 to \$199,999
 _____ \$25,000 to \$34,999 _____ \$75,000 to \$99,999 _____ \$200,000 or more
 _____ \$35,000 to \$49,999 _____ \$100,000 to \$149,999

26. What is the zip code for your PRIMARY residence? _____

27. If you live in Larimer County, how long have you lived here? _____ (Years)



This survey will help Larimer County Department of Natural Resources staff better understand visitors' views and improve service delivery. Your participation is completely voluntary and your answers will remain anonymous. **Thank you for your assistance—your input is greatly appreciated!**



TODAY'S VISIT

- About how many visits have you made to **Red Mountain Open Space** in the past 12 months? (If this is your first visit or you come here less than once per year, write 0.) _____
- Which activities have you participated in **TODAY** during your visit to Red Mountain Open Space? (Check all that apply.)
 ___ Hiking ___ Family gathering ___ Photography/Art
 ___ Mountain biking ___ Horseback riding ___ Wildlife viewing
 ___ Trail running ___ Picnicking
- Above, **CIRCLE** the **PRIMARY ACTIVITY** for **TODAY**.
- How did you get to **Red Mountain Open Space** today? (Check one.)
 ___ Vehicle ___ Dropped-off ___ Bicycle ___ Horseback ___ Run/Walk ___ Other: _____
- Which of the following best describes **WHO** traveled here today? (Check one, and write in the number of people in your group, if more than just you today.)
 ___ Just me! ___ Group (___ # adults, ___ # children)
- Did you check conditions for **Red Mountain Open Space** before you came out **TODAY**?
 ___ Yes ___ No ___ If yes, check all that apply: ___ NoCo Trail Report ___ Social media ___ Website

7. For the facilities that you used today during your visit, please rate their quality by circling the appropriate number for each facility.

	Did Not Use		Very Poor		Average		Good		Very Good	
	0	1	2	3	4	5				
Restrooms	0	1	2	3	4	5				
Parking Areas	0	1	2	3	4	5				
Picnic Areas	0	1	2	3	4	5				
Trash Receptacles	0	1	2	3	4	5				
Kiosk Information	0	1	2	3	4	5				
Trails	0	1	2	3	4	5				

Please explain why you rated the facilities this way: _____

8. How would you rate the overall quality of **Red Mountain Open Space**? (Circle one number.)

Poor 1 2 3 4 5
Neutral Excellent

Please explain why you rated it this way: _____

LARIMER COUNTY NATURAL RESOURCES PROPERTIES

- Over the past 12 months, how many times have you visited other Larimer County Natural Resources properties? (Write a number next to each open space; if less than once per year, write 0.)
 ___ Carter Lake ___ Devil's Backbone Open Space ___ Lions Open Space
 ___ Flatiron Reservoir ___ Eagle's Nest Open Space ___ Ramsay-Shockey Open Space
 ___ Horsetooth Reservoir ___ Hermit Park Open Space ___ River Bluffs Open Space
 ___ Pinewood Reservoir ___ Horsetooth Mountain Open Space
- Why did you choose to come out to **Red Mountain Open Space today**? (Check all that apply.)
 ___ Less Crowded ___ Variety of Trails ___ Solitude ___ Other: _____
- Is there a particular **Larimer County Natural Resources property** that you choose to **no longer** visit?
 ___ Yes ___ No ___ If yes, which one? _____
 ___ If yes, why do you avoid this property? _____

OBSERVATIONS AT RED MOUNTAIN OPEN SPACE

12. How often have you witnessed each of the following during **THIS VISIT** to Red Mountain Open Space? (Circle one and include a description, if applicable.)

	Never	1 or 2 times	3 to 5 times	Many times	Almost always
Witnessed hikers behaving unsafely if so, how? _____	0	1	2	3	4
Witnessed mountain bikers behaving unsafely if so, how? _____	0	1	2	3	4
Witnessed horseback riders behaving unsafely if so, how? _____	0	1	2	3	4
Witnessed hikers being discourteous if so, how? _____	0	1	2	3	4
Witnessed mountain bikers being discourteous if so, how? _____	0	1	2	3	4
Witnessed horseback riders being discourteous if so, how? _____	0	1	2	3	4

CONTINUE ON BACK ↓

13. To what extent do you think each of the following is a problem at Red Mountain Open Space?

	Never	Rarely	Sometimes	Often	Almost always
Hikers hiking unsafely	0	1	2	3	4
Mountain bikers riding unsafely	0	1	2	3	4
Horseback riders riding unsafely	0	1	2	3	4
Hikers being discourteous	0	1	2	3	4
Mountain bikers being discourteous	0	1	2	3	4
Horseback riders being discourteous	0	1	2	3	4

14. Please estimate the number of each you saw TODAY at the trailhead and on the trail.

	Number seen at the trailhead	Number seen on the trail
Hikers	_____	_____
Mountain bikers	_____	_____
Horseback riders	_____	_____

15. Did you feel crowded by the number of other visitors at each of the following locations? (Circle one.)

Did you feel crowded by:	Not at all Crowded	Slightly Crowded	Moderately Crowded	Extremely Crowded					
<u>Hikers</u>									
At the trailhead	1	2	3	4	5	6	7	8	9
On the trail	1	2	3	4	5	6	7	8	9
<u>Mountain bikers</u>									
At the trailhead	1	2	3	4	5	6	7	8	9
On the trail	1	2	3	4	5	6	7	8	9
<u>Horseback riders</u>									
At the trailhead	1	2	3	4	5	6	7	8	9
On the trail	1	2	3	4	5	6	7	8	9

VISITOR DEMOGRAPHICS - Your answers will remain anonymous.

16. What is your gender? _____Female _____Male

17. What is your age? _____(Years)

18. Indicate whether or not you are of Hispanic or Latino ethnicity.

_____Hispanic or Latino _____Not Hispanic or Latino

19. Choose the race with which you most closely identify. (Check all that apply.)

_____American Indian or Alaska Native _____Black/African American _____White
 _____Native Hawaiian/Pacific Islander _____Asian _____Don't know _____Other_____

20. What is your highest level of completed education?

_____Some High School or less _____Associate's degree _____Master's
 _____Graduated from High School/GED _____Bachelor's degree _____Professional/Doctorate

21. What is your annual household income?

_____Less than \$24,999 _____\$50,000 to \$74,999 _____\$150,000 to \$199,999
 _____\$25,000 to \$34,999 _____\$75,000 to \$99,999 _____\$200,000 or more
 _____\$35,000 to \$49,999 _____\$100,000 to \$149,999

22. What is the zip code for your PRIMARY residence? _____

23. If you live in Larimer County, how long have you lived here? _____(Years)

ADDITIONAL COMMENTS:

Appendix B

Ranking of Perceived Crowding in Colorado

C1. Ranking of Perceived Crowding

Visitor Survey Study site	Year	Evaluation by:	Evaluation for:	% of Crowding
Mesa Verde National Park	2001	Visitors at Cliff Palace	Other visitors	76
Rocky Mountain National Park	2001	Tourists	Visitors at Alpine Visitor Center	74
Mt Evans	1994	Deer Hunter	Other Deer Hunters	72
Mt Evans	1994	Tourists	Regional Survey	70
Rocky Mountain National Park	2001	Hikers	Longs Peak Hikers on the Trail	69
Rocky Mountain National Park	2001	Hikers	Longs Peak Hikers at the Summit	69
Rocky Mountain National Park	2001	Tourists	Trails near Bear Lake	68
Mesa Verde National Park	2001	Visitors at Museum	Other visitors - overall	67
Mesa Verde National Park	2001	Visitors at Spruce Tree House	Visitors at Spruce Tree House	67
Mesa Verde National Park	2001	Visitors at Museum	Other visitors at Museum	66
Rocky Mountain National Park	2001	Tourists	Bear Lake by Kiosk	66
Rocky Mountain National Park	2001	Tourists	Trail around Bear Lake	65
Mesa Verde National Park	2001	Visitors at Spruce Tree House	Other visitors - overall	64
Mesa Verde National Park	2001	Visitors at Step House	Other visitors - overall	63
Mt Evans	1994	Tourists	Other Tourist	61
Mesa Verde National Park	2001	Visitors at Cliff Palace	Other visitors - overall	60
City of Fort Collins – Maxwell	2018	Mountain bikers	Hikers on trail	58
Vail Pass White River NF	2003	Nonmotorized Users	snowmobilers at trailhead	57
Vail Pass White River NF	2003	Nonmotorized Users	snowmobilers on trail	57
Rocky Mountain National Park	2001	Tourists	Bear Lake Glacier Basin Shuttle Lot	55
City of Fort Collins – Maxwell	2018	Mountain bikers	Mountain bikers on trail	49
Mesa Verde National Park	2001	Visitors at Sun Point Overlook	Other visitors	48
Appalachian National Scenic Trail	1999	Non-Thru hiker	Other hikers	47
Gunnison Gorge Natl Conserv Area	2002	Gunnison Gorge Wilderness	All users	47
Gunnison Gorge Natl Conserv Area	2002	Gunnison River non-wilderness	All users	42
City of Fort Collins – Reservoir Ridge	2018	Mountain bikers	Hikers on trail	41
Cache la Poudre River	1993	Anglers	Other anglers	40
Colorado Reservoirs	1998	Anglers	Other anglers	39
Gunnison Gorge Natl Conserv. Area	2002	Flat Top & Peach Valley - OHVs	All users	39
Rocky Mountain National Park	2001	Hikers	Longs Peak hikers at trailhead	37
City of Fort Collins – Maxwell	2018	Mountain bikers	Hikers at trailhead	37
Colorado Reservoirs	1998	Anglers	South Catamount Reservoir anglers	35

Visitor Survey Study site	Year	Evaluation by:	Evaluation for:	% of Crowding
Wolf Creek Pass	2003	Nonmotorized Users	Snowmobilers at trailhead	35
Cache la Poudre River	1993	Anglers	Evaluations of rafters	34
City of Fort Collins – Coyote Ridge	2018	Mountain bikers	Hikers on trail	33
Cache la Poudre River	1993	Kayakers	Rafters at the put-in	31
Vail Pass - White River NF	2003	Motorized Users	skiers/snowboarders at trailhead	31
Jefferson County	1996	Hikers	Bikers	30
Vail Pass - White River NF	2003	Motorized users	snowmobilers at trailhead	30
Horsetooth Mountain Open Space	2018	Visitors	Hikers on trail	30
City of Fort Collins – Maxwell	2018	Hikers	Mountain bikers on trail	30
City of Fort Collins – Pineridge	2018	Mountain bikers	Mountain bikers on trail	30
Cache la Poudre River	1993	Anglers	Kayakers	29
Vail Pass White River NF	2003	Nonmotorized Users	skiers/snowboarders at trailhead	29
Wolf Creek Pass	2003	Nonmotorized Users	snowmobilers on trail	29
Vail Pass White River NF	2003	Nonmotorized Users	skiers/snowboarders on trail	28
Wolf Creek Pass	2003	Nonmotorized Users	skiers/snowboarders on trailhead	27
City of Fort Collins – Coyote Ridge	2018	Mountain bikers	Mountain bikers on trail	26
City of Fort Collins – Maxwell	2018	Hikers	Hikers on trail	25
City of Fort Collins – Pineridge	2018	Hikers	Mountain bikers on trail	25
City of Fort Collins – Pineridge	2018	Mountain bikers	Hikers on trail	25
Horsetooth Mountain Open Space	2018	Visitors	Hikers at trailhead	24
City of Fort Collins – Maxwell	2018	Mountain bikers	Mountain bikers at trailhead	23
City of Fort Collins – Pineridge	2018	Mountain bikers	Mountain bikers at trailhead	23
Cache la Poudre River	1993	Rafters	Other rafters at the put-in	22
Jefferson County	1996	Bikers and hikers (Dual sport)	Bikers	22
Cache la Poudre River	1993	Kayakers	Rafters at the take-out	21
City of Fort Collins – Coyote Ridge	2018	Mountain bikers	Hikers at trailhead	21
City of Fort Collins – Coyote Ridge	2018	Hikers	Mountain bikers on trail	20
Jefferson County	1996	bikers	Other bikers	19
City of Fort Collins – Reservoir Ridge	2018	Hikers	Mountain bikers on trail	19
Colorado Reservoirs	1998	Anglers	Crystall Reservoir anglers	18
Vail Pass White River NF	2003	Motorized Users	skiers/snowboarders on trail	18
City of Fort Collins – Maxwell	2018	Hikers	Hikers at trailhead	18
City of Fort Collins – Reservoir Ridge	2018	Hikers	Hikers on trail	18

Visitor Survey Study site	Year	Evaluation by:	Evaluation for:	% of Crowding
City of Fort Collins – Coyote Ridge	2018	Hikers	Hikers on trail	16
City of Fort Collins – Pineridge	2018	Hikers	Hikers on trail	14
City of Fort Collins – Coyote Ridge	2018	Mountain bikers	Mountain bikers at trailhead	14
City of Fort Collins – Pineridge	2018	Mountain bikers	Hikers at trailhead	14
Cache la Poudre River	1993	Rafters	Other rafters on river	13
Cache la Poudre River	1993	Rafters	Other rafters at the take-out	13
Mesa Verde National Park	2001	Visitors at Step House	Other visitors - at Step House	13
Vail Pass White River NF	2003	Motorized Users	snowmobilers on trail	13
Wolf Creek Pass	2003	Motorized Users	snowmobilers at trailhead	13
City of Fort Collins – Reservoir Ridge	2018	Mountain bikers	Hikers at trailhead	13
Jefferson County	1996	Bikers	Hikers	12
Jefferson County	1996	Hikers & bikers (Dual-sport)	Hikers	12
Wolf Creek Pass	2003	Nonmotorized Users	skiers/snowboarders on trail	12
Wolf Creek Pass	2003	Motorized Users	skiers/snowboarders on trail	12
City of Fort Collins – Reservoir Ridge	2018	Mountain bikers	Mountain bikers on trail	12
Mesa Verde National Park	2001	Visitors at Sun Point Overlook	Visitors at Sun Point Overlook	11
Horsetooth Mountain Open Space	2018	Visitors	Mountain bikers on trail	11
City of Fort Collins – Reservoir Ridge	2018	Hikers	Hikers at trailhead	11
City of Fort Collins – Maxwell	2018	Hikers	Mountain bikers at trailhead	10
Cache la Poudre River	1993	Kayakers	Other kayakers at the take-out	9
Jefferson County	1996	Hikers	Other Hikers	9
Wolf Creek Pass	2003	Motorized Users	Snowmobilers on trail	9
City of Fort Collins – Coyote Ridge	2018	Hikers	Hikers at trailhead	9
City of Fort Collins – Reservoir Ridge	2018	Hikers	Mountain bikers at trailhead	9
Wolf Creek Pass	2003	Motorized Users	Skiers/snowboarders at trailhead	8
Cache la Poudre River	1993	Kayakers	Kayakers at the put-in	7
Horsetooth Mountain Open Space	2018	Visitors	Mountain bikers at trailhead	7
Cache la Poudre River	1993	Rafters	Kayakers on river	7
City of Fort Collins – Coyote Ridge	2018	Hikers	Mountain bikers at trailhead	7
Cache la Poudre River	1993	Rafters	Kayakers at the put-in	6
Cache la Poudre River	1993	Rafters	Kayakers at the take-out	4
Red Mountain Open Space	2018	Visitors	Hikers at trailhead	4
Red Mountain Open Space	2018	Visitors	Hikers on trail	4

Visitor Survey Study site	Year	Evaluation by:	Evaluation for:	% of Crowding
City of Fort Collins – Pineridge	2018	Hikers	Mountain bikers at trailhead	4
City of Fort Collins	2018	Soapstone visitors	Hikers at trailhead	3
Red Mountain Open Space	2018	Visitors	Mountain bikers on trail	2
City of Fort Collins	2018	Soapstone visitors	Mountain bikers at trailhead	2
City of Fort Collins	2018	Soapstone visitors	Mountain bikers on trail	2
City of Fort Collins – Pineridge	2018	Hikers	Hikers at trailhead	2
Red Mountain Open Space	2018	Visitors	Mountain bikers at trailhead	1
City of Fort Collins	2018	Soapstone visitors	Hikers on trail	1
City of Fort Collins	2018	Soapstone visitors	Horseback riders at trailhead	1
City of Fort Collins	2018	Soapstone visitors	Horseback riders on trail	1
City of Fort Collins – Reservoir Ridge	2018	Mountain bikers	Mountain bikers at trailhead	0

Appendix C

Criteria for Choosing Indicators and Developing Standards

Criteria for Choosing Indicators

Before standards can be developed, appropriate impact indicators must be selected. As used in other sciences (e.g., medicine, agriculture, forestry), indicators are variables that reflect the “health” of something (Ott, 1978). Indicators identify what conditions will be monitored the standards define when those conditions are acceptable or unacceptable.

Although any number of variables could be monitored, it is important to identify those indicators that are most linked to issues of concern (Graefe et al., 1990). A manager could count the number of vehicles at trailhead parking lots, but past research suggests that monitoring how individuals distribute themselves in time and space throughout a natural area, or how they interact with other visitors, are better indicators of recreation-opportunity differences (Kuss et al., 1990; Shelby & Heberlein, 1986).

It is also important to recognize that there is no single “best” indicator or set of indicators. The choice of indicators and standards depends on the particular impact under consideration and the specific characteristics of the site. In other words, indicators and standards should be specific to the resource and opportunities provided at the site. The key is to select those impact indicators that matter the most for a given experience. Although indicators and standards are site specific, it is possible to identify criteria for choosing indicators.

Criteria for Choosing Indicators

- Specificity and responsiveness
- Sensitivity
- Measurability
- Integration with management objectives
- Impact importance

Specificity and Responsiveness. Indicators are only useful if they refer to specific conditions created by human use. For example, an overall measure of human density in an area is too vague unless it is linked to the impact conditions associated with that level of use (e.g., encounters with others, loss of solitude-oriented wildlife-viewing opportunities). Specific indicators might focus on the cleanliness of restrooms or trash receptacles.

Indicators should reflect impact changes related to impacts caused by human activity rather than those caused by natural events. Unfortunately, disentangling human from natural impacts is complex. Wall and Wright (1977) suggest four factors that limit ecological studies and introduce difficulties in identifying human impacts: (1) there are often no baseline data for comparison to natural conditions; (2) it is difficult to disentangle the roles of humans and nature; (3) there are spatial and temporal discontinuities between cause and effect; and (4) in light of complex ecosystem interactions, it is difficult to isolate individual components. Some impacts take the form of naturally occurring processes that have been speeded up by human interference. Even without human activity, however, severe impacts can occur due to natural causes that render the impacts associated with recreational use insignificant.

Sensitivity. The indicator needs to be sensitive to changes in conditions during relatively short time periods; Merigliano (1989) suggests within one year. Such changes may be reflected in biological conditions (e.g., the amount of erosion on a given trail) or the human experience (e.g., the frequency of encounters with others). If the indicator only changes after impacts are substantial or never changes, the variable lacks the early warning signs that allow managers to be proactive.

General measures of overall visitor satisfaction, for example, is often a major management objective and has been one of the most commonly used indicators of recreation quality. If, as traditionally assumed, enjoyment from a recreation experience is inversely correlated with the number of people present, reported overall satisfaction ratings should provide the basis for setting standards. Studies in a variety of

settings, however, have consistently found that recreationists are generally satisfied with their experience independent of the use intensities they experienced (Kuss et al., 1990).

A variety of explanations have been offered to account for these findings. For example, to cope with the negative consequences of increasing numbers of visitors (e.g., loss of solitude), some individuals modify their standards for what is acceptable. The end result is a “product shift” or change in the character of the experience at a given area. Other people who are more sensitive to user densities may stop visiting an area all together if adjustments, either attitudinal (product shift) or behavioral (e.g., visiting during off peak times, visiting less frequently), fail to bring about the desired experience. With all of these explanations, the current visitors to a heavily used area may be as satisfied as visitors 5 or 10 years ago when use levels were much lower but are receiving a different type of experience.

While overall satisfaction measures are not always sensitive to changing use conditions, other measures of recreation quality do show the requisite variation. Perceived crowding, for example, combines the descriptive information (the density or encounter level experienced by the individual) with evaluative information (the individual’s negative evaluation of that density or encounter level). When people evaluate an area as crowded, they have at least implicitly compared the impact they experienced with their perception of a standard. Findings from the comparative analysis of 181 crowding studies and 615 different settings and activities indicated that crowding varied across recreational settings and activities, time or season of use, resource availability, accessibility, or convenience, and management strategies designed to limit visitor numbers (Vaske & Shelby, 2008). This variability has allowed recreation researchers and managers to use crowding as a useful indicator.

Measurability. Indicators should be easily and reliably measurable in the field. When choosing impact indicators, it is important to specify the level of detail at which selected indicators will be measured and evaluated. The scale of measurement may range from sophisticated indices using quantitative measurements to subjective visual rating schemes. The choice of an appropriate level of measurement depends on such factors as the availability of funding and personnel, number of sites that must be evaluated, and frequency of measurement and site evaluation.

To illustrate, early crowding studies employed multiple-item scales (Shelby et al. 1989). While such scales consider a concept from different points of view and provide the data necessary for estimating reliability coefficients, the mathematical calculations involved in combining survey items into a single scale score sometimes make it difficult to compare results and can render the findings less understandable to managers (Vaske & Shelby, 2008). To overcome these problems, the single item crowding indicator discussed here that asks people to indicate how crowded the area was at the time of their visit overcomes these problems.

The crowding measure alone is not a perfect substitute for information about use levels, impacts, and evaluative standards that a more complete study can provide. Nevertheless, one can easily collect data with a single crowding item, thereby providing considerable insight about a study site. The single-item crowding measure is easy to interpret and compare across studies and has been widely used in outdoor-recreation research (Shelby et al. 1989; Vaske & Shelby, 2008). The consistency of these findings makes the crowding measure a good indicator for addressing social impacts.

Integration with Management Objectives. Indicators need to be linked to the management objectives that specify the type of experience to be provided. For example, if a management objective is to provide a low-density backcountry experience, the indicators should focus on the number of encounters between visitors, perceptions of crowding, and encounter norm tolerances. Alternatively, if a management objective involves frontcountry opportunities, the indicators might be linked to visitor safety and the cleanliness of facilities.

Useful impact indicators are those that can be treated by management prescriptions. A seemingly eloquent solution to a human-caused impact that cannot be addressed by management actions does not resolve the

problem condition. The most useful indicators reflect multiple impact conditions. Because managers typically have small monitoring budgets, indicators that can be used to represent several different impacts allow managers to focus their attention and efforts while being reasonably assured that the overall quality of a given experience is maintained. Crowding or norm tolerances are examples that often reflect several other interaction-type indicators such as encounters with others.

The concept of norms provides a theoretical framework for collecting and organizing information about users' evaluations of conditions and has proven to be sensitive to changing use conditions. As defined by one research tradition, norms are standards that people use to evaluate behavior or the conditions created by behavior as acceptable or unacceptable (see Vaske & Whittaker, 2004 for a review). Norms define what behavior or conditions should be, and can apply to individuals, collective behavior, or management actions designed to constrain collective behavior. This normative approach allows researchers to define social norms, describe a range of acceptable behavior or conditions, explore agreement about the norm, and characterize the type of norm (e.g., no tolerance, single tolerance, or multiple tolerance norms; Whittaker & Shelby, 1988).

Normative concepts in natural-resource settings were initially applied to encounter impacts in backcountry settings (encounter norms measure tolerances for the number of contacts with other users). The focus on encounters in backcountry worked because encounter levels were generally low, survey respondents could count and remember them, and encounters have important effects on the quality of experiences when solitude is a feature. Most studies showed that encounter norms across these backcountry settings were stable and strongly agreed upon, usually averaging about four encounters per day (Vaske, Shelby, Graefe, & Heberlein, 1986).

More recently, norm concepts and methods have been applied to a greater diversity of impacts and settings. Research on encounter norms in higher-density frontcountry settings, for example, has demonstrated more variation in visitors' tolerances for others as well as lower levels of agreement (Donnelly et al., 2000). This led some researchers to examine norms for interaction impacts other than encounters (Vaske & Whittaker, 2004). Norms for recreationist proximity, percentage of time within sight of others, incidents of discourteous behavior, competition for specific resources, and waiting times at access areas have all been examined. These alternative interaction impacts are often more salient than encounters in higher-use settings. Taken together, this work suggests that normative data are sensitive to changing use conditions, can facilitate understanding visitors' evaluations of social and environmental conditions, and have proven helpful to managers.

Normative standards may also provide a gauge for estimating benefits to society. If, for example, a management objective is to enhance the flow of dollars into a community's economy by creating more recreation opportunities, one indicator might be the occupancy rate at local motels. The standard in this situation might be 50% occupancy.

Impact Importance. Finally, and most importantly, indicators should represent important impacts. For example, if managers, stakeholders and visitors are not concerned about a social impact or researchers are not able to show how an impact negatively influences environment, developing standards is difficult to justify. If wildlife viewers are more interested in photographing elk than the number of people standing next to them, frequency of seeing elk becomes a better indicator of quality experiences than social-interaction variables. Alternatively, if visitors consider solitude in viewing experiences as more important than number of animals seen, encounters with other visitors becomes an important quality indicator.

Characteristics of Good Standards. Specific standards are established for each impact indicator and define an acceptable level of impact for each indicator. Just as impact indicators reflect management goals and objectives, standards are quantifiable value judgments concerning what the agency is attempting to achieve. Based on previous work (Graefe et al., 1990), the following discusses several important characteristics of good standards.

- Quantifiable
- Time Bounded
- Attainable
- Output Oriented

Quantifiable. Standards restate management objectives in quantitative terms. A good standard unequivocally states the level of acceptable impact. Such statements define how much is acceptable in quantitative terms. For example, a good standard might specify that visitors should be able to watch wildlife with fewer than 10 other people present. Specifying that there should only be “a few other people present” is not a good standard because it does not define how many constitutes “a few.”

Time Bounded. “Time-boundedness” complements the quantifiable component of a good standard. Quantifiable standards only state “how much” is appropriate. Time-bounded standards specify “how much, how often” or “how much by when.” This is especially important for impacts that have a seasonal component. Seeing 500 elk in Rocky Mountain National Park (ROMO) is a common occurrence for a fall evening, but a rare event during the summer when the elk are at higher elevations. Such seasonal differences in viewable wildlife often correlate with fluctuations in visitor numbers. The number of day visitors to ROMO who are explicitly interested in viewing and photographing elk, for example, is substantially greater in the fall than other seasons. Time-bounded standards recognize such variation.

Attainable. Management standards need to be reasonably attainable. When standards are too easy, little is accomplished. If they are too difficult to achieve, both managers and visitors are likely to become frustrated. Good objectives and standards should “moderately challenge” the manager and staff.

For each important indicator, standards should be set at levels that reflect management’s intent for resource or experiential outcomes in the area. While standards that are difficult to attain are generally undesirable, they may still be necessary. A “no litter” standard, for example, may not be attainable, but is still correct. The cynical excuse for not setting appropriate standards is that managing for some conditions is “too hard.” On the other hand, management strategies designed to meet a standard may produce sufficient positive change to warrant the effort. Without standards, it is too easy to do nothing (management by default).

Output Oriented. Standards should be “output” rather than “input” oriented. This distinction suggests that managers should focus on the conditions to be achieved rather than the way the standard is met. For example, a standard that specifies “150 people per day in a wildlife-viewing area” is not a good standard because it refers to an action (use limits) rather than an acceptable impact. “Less than 10 encounters per day” or “no more that 35% of the visitors feeling some level of crowding” are better standards because they emphasize the acceptability of different impact conditions.

Sources for Selecting Indicators/Developing Standards

Identifying characteristics of good standards is a useful exercise, but it does not provide much information about what standards should be (see inset – Different Experiences—Different Indicators and Standards), or where they should come from. Many different management and research efforts have developed or recommended various standards, utilizing a variety of techniques or sources of information. A review of the most common sources and techniques follows.

- Laws and policy mandates

- Manager's professional judgment
- Biological research
- Public involvement
- Visitor or population surveys

Laws and Policy Mandates. Laws and policy mandates may provide guidelines for selecting specific impact indicators and developing appropriate standards for desirable wildlife-viewing experiences. Most laws, however, are written in broad and often vague language. Directives such as “provide high-quality viewing experiences” or “minimize conflict” lack the specificity necessary to set quantitative standards.

Manager's Professional Judgment. Managers often develop standards based on their interpretation of laws and policy mandates, their knowledge of the area, their understanding of the recreation opportunities, and their knowledge of conditions that define those opportunities. By imposing their idea of what is appropriate, or even their own personal values, in the decision-making process, managers have implicitly been setting standards for years. An argument can be made, however, for setting standards more explicitly. First, although management standards have traditionally been based solely on professional judgment and biological expertise, the increasingly political nature of all natural-resource actions implies that decisions made in isolation are likely to generate considerable public scrutiny. Second, although it has been assumed that managers understand the acceptability of different resource and experiential conditions, empirical evidence suggests considerable differences between the views of managers, visitors, and organized interest groups (Magill, 1988; Gill, 1996). By formalizing the process for developing standards and including different points of view, managers gain a greater understanding of their objectives, have more justification for their actions, and are able to be more proactive when potential problem situations arise.

Biological Research. Science-based research has been and always will be an important component in developing standards. Data help clarify what management goals are biologically possible and describe how management actions affect wildlife impacts. Biological research by itself, however, cannot predict which alternatives are more or less desirable. For example, scientists are often assumed to be the most appropriate individuals to set standards for acceptable air- and water-pollution levels. When viewed from the larger societal perspective, however, this assumption is invalid. The scientific data describe the consequences of allowing a certain number of pollutants per volume of air or water (e.g., X number of people will die at contamination level Y). Whether this risk level is considered acceptable depends on legislation or other government functions. Even at extremely low levels of water pollution, some people are likely to become ill. It is impossible to set a standard until the acceptability of various risk levels has been identified.

Public Involvement. Traditional public involvement (e.g., focus groups, public meetings) represent another important strategy for developing standards, especially for social-impact indicators and standards. Recreationists are experts in identifying the characteristics of an experience they find most important. When given the opportunity to communicate their preferences, individuals are typically willing to express their views. Small focus-group meetings with different interest groups, for example, provide a useful starting point for identifying which impacts matter more. Standards can be developed from input provided by participants at larger public meetings, but it is often difficult to focus discussion on specific issues at these meetings. Moreover, individuals who attend public hearings and voice the loudest concerns may not represent all constituents.

Although these traditional techniques for soliciting citizen participation provide useful information, managers are increasingly adopting a stakeholder approach to involving public interests. Approaches such as transactive planning and co-management bring diverse interests and stakeholders in direct communication with one another and with agency decision makers to fashion collaborative solutions to management challenges. For example, agencies now routinely form citizen task forces, roundtables, advisory councils, and stakeholder planning teams to assist agency personnel with planning tasks and

decisions. When multiple stakeholders have a voice in developing standards, polarized views about acceptable conditions and experiences are likely to emerge. Under these conditions, some negotiation and compromise must occur to develop standards that will be supported by the different publics and interest groups.

Visitor or Population Surveys. As this report has tried to demonstrate, perhaps the most useful source for developing standards involves visitor or population surveys. Even the best public-involvement efforts tend to neglect the “general public” in favor of special-interest groups who voice strong opinions on a topic. When surveys adhere to scientific principles (e.g., reliability, validity, representativeness, generalizability), the approach is especially useful for developing standards for social indicators (Vaske, 2008).

First, the survey should include a range of impact conditions and gauge which of those impacts are more important. Managers may ultimately establish standards for only a few key impact indicators. However, because surveys are usually conducted before this decision is made, asking about several different types of impact (e.g., human-interaction impacts) allows some flexibility in choosing different indicators. If respondents are asked to consider the relative importance of different impacts, the survey can facilitate the indicator selection process.

Second, questions about users’ personal standards should be direct, involve quantitative response categories, and be easy to understand. As noted previously, extensive research has failed to demonstrate a consistent relationship between impact variables (e.g., encounters with others) and general evaluative measures (e.g., satisfaction). Most researchers recommend focusing on the evaluation of impacts themselves (Shelby & Heberlein, 1986). For example, surveys might ask respondents to report the number of encounters they are willing to have per day or to rate acceptable encounter levels for different experiences. An effective technique used in several studies involves parallel questions about the amount of impact individuals experienced and the amount of impact they are willing to tolerate. Statistical comparisons of such results provide data about where to set standards and allow definition of an impact problem.

Third, when asking about quantitative estimates of acceptable impact levels, respondents should be allowed to specify that “this impact does not matter to me” or that “the impact matters but I cannot give a number” (Hall, Shelby, & Rolloff, 1996; Roggenbuck, Williams, Bange, & Dean, 1991). Some wildlife viewers, especially those with little experience, may not have opinions about acceptable impact levels or may not even be aware of the impact situation (Donnelly et al., 2000). Finally, analysis of survey data should go beyond simple frequencies or measures of central tendency. Such measures are useful starting points, but closer examination of the response distributions reported by different groups or the level of group agreement are also important for developing standards.

Appendix D

Safety and Discourteous Behavior Concerns

Of 1,466 surveys at HTMOS and RMOS, 32 commented on hikers behaving unsafely (Table B1), 45 commented on mountain bikers behaving unsafely (Table B2), and seven commented on equestrians behaving unsafely (Table B3). Their comments are summarized below.

Table B1. Respondent explanations for unsafe hiking

	Number
Climbing illegally	10
Off trail hiking	7
Not prepared	7
Dogs off leash	4
Running on trails	2
Feeding wildlife	1
Trash	1

Table B2. Respondent explanations for unsafe mountain biking

	Number
Going too fast	26
Not yielding to others	9
Riding off trail	3
Not wearing helmet	2
Approaching too close behind horse	2
Biking on wrong trail	2
Not paying attention	1

Table B3. Respondent explanations for unsafe horseback riding

	Number
Riding off trail	3
Not yielding to others	1
Poop on trails	1
Standing on trail; not riding	1
Horses not used to people	1

Of 1,466 surveys at HTMOS and RMOS, 44 commented on hikers being discourteous (Table B4), 42 commented on mountain bikers being discourteous (Table B5), and 12 commented on equestrians being discourteous (Table B6). Their comments are summarized below.

Table B4. Respondent explanations for discourteous hiking

	Number
Loud music	12
Dog waste	7
Not yielding	6
Unleashed dogs	5
Negative attitude toward mountain bikers	4
Will not share the trail	4
Trash	2
Hiking off trail	2
Walking in restoration area	1
Smoking	1

Table B5. Respondent explanations for discourteous mountain biking

	Number
Not yielding	14
Rude and loud	12
Riding too fast	7
Riding off trail	5
Not notifying when approaching	4

Table B6. Respondent explanations for discourteous horseback riding

	Number
Horse waste	4
Not yielding	4
Riding off trail	3
Angry toward other users	1

Appendix E

Survey Design Methods

Survey Methods

On-site surveys were administered by trained staff and volunteers between June 1, 2017 to May 31, 2018. For this study, the surveys were administered at three locations; Main and Soderberg trailheads at Horsetooth Mountain and the Red Mountain trailhead. The survey period consisted of four seasons; summer (June-August 2017), fall (September-November 2017), winter (December 2017-February 2018), and spring (March-May 2018).

To achieve a random sampling of park visitors, a stratified-cluster sampling method was used to determine the sampling proportions for each survey location at Horsetooth Mountain and Red Mountain during the weekdays and weekends. The proportion of effort was based on data provided from the County's infrared trail counters from previous years. The proportion of effort allocated at each trailhead during the weekend and weekday is shown below.

Allocation of sampling effort

Location	Time of Week	% of Total Effort to Allocate
Horsetooth Main	Weekday	44%
Horsetooth Main	Weekend	35%
Horsetooth Soderberg	Weekday	11%
Horsetooth Soderberg	Weekday	10%
Red Mountain Trailhead	Weekday	65%
Red Mountain Trailhead	Weekend	35%

To determine the number of shifts per week at each trailhead, the proportion of effort was multiplied by the estimated staff and volunteer hours (300 total) toward the project. This figure was divided by the number of weeks of staff and volunteer availability. During winter months, the number of shifts at HTMOS was reduced to reflect decreased staff availability. The RMOS shifts, however, were not reduced in November since the property's seasonal closure occurs between December through February.

Number of sampling shifts per week

Location	Time of Week	Shifts per Week (June-Sept; March-May)	Shifts per Week (Nov-Feb)
Horsetooth Main	Weekday	1	.5
Horsetooth Main	Weekend	1	.5
Horsetooth Soderberg	Weekday	.5 (2x per month)	.5 (2x per month)
Horsetooth Soderberg	Weekend	.5 (2x per month)	.5 (2x per month)
Red Mountain Trailhead	Weekday	2	2 (Nov. only)
Red Mountain Trailhead	Weekend	1	1 (Nov. only)

The sampling periods at HTMOS and RMOS varied, primarily due to visitation. Survey sessions were two hours long at HTMOS and four hours at RMOS and conducted in the morning, afternoon and evening. At HTMOS, the survey shifts were shorter than at RMOS due to a high volume of visitors in the park. Survey administrators asked one individual per group at HTMOS versus asking all visitors during the survey shift at RMOS. As the seasons shortened and lengthened, the afternoon hours were adjusted accordingly.

For each location, a time block array was created with shift time options that are possible to be selected for each day. A random number generator (Statrek.com) was used to select shift times from the time block arrays.

Survey Design

The 8.5 x 14 double-sided visitor survey was designed for each respondent to fill out individually. The questions were designed to meet the study's core purpose and objectives. The survey questions included the frequency of visits, primary activity, group characteristics, mode of transportation, if trail conditions were checked, ratings of facilities, frequency of visits to other county properties, reasons for visiting, if

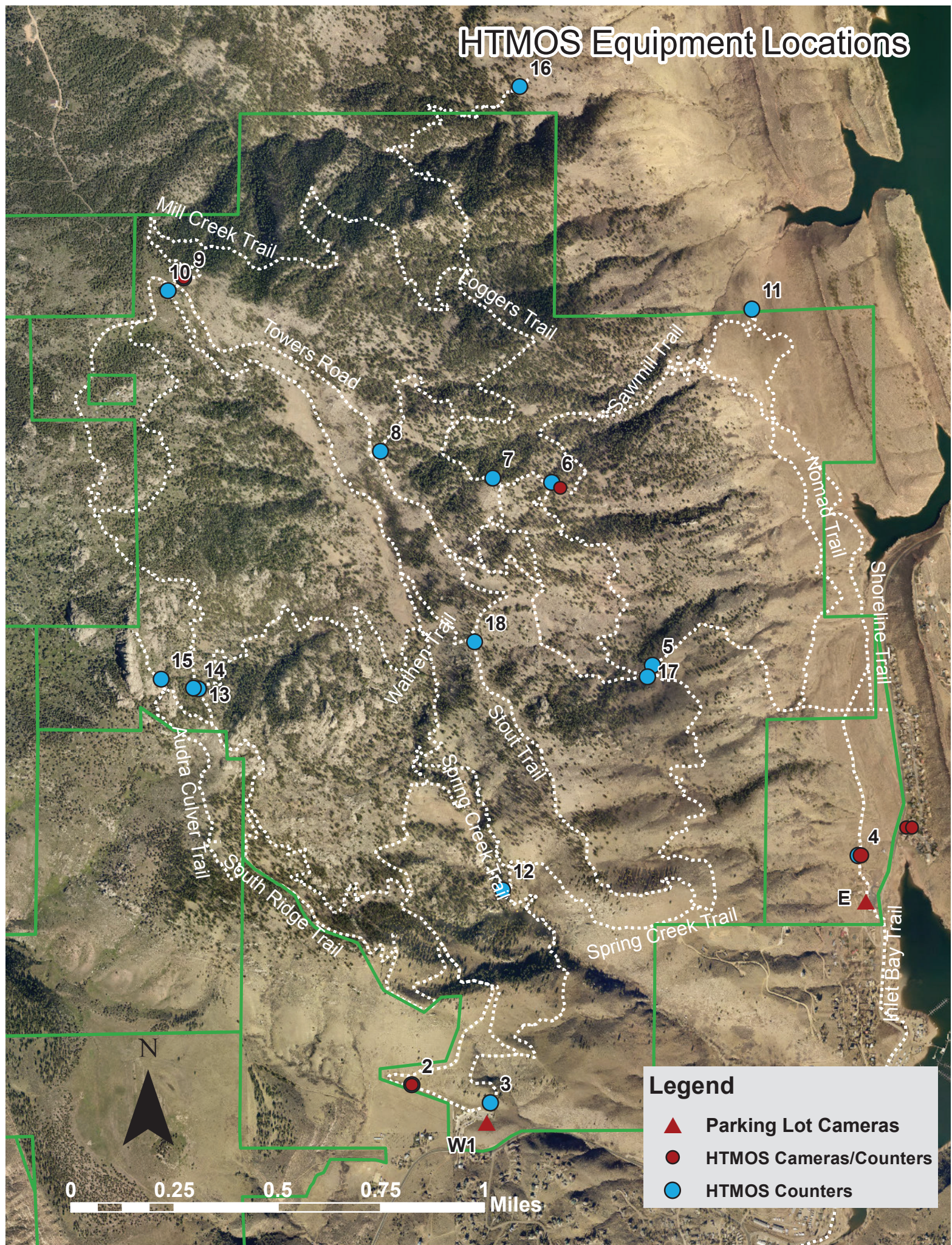
they avoid any county open space and park properties, if they witnessed unsafe or discourteous behaviors, if they perceived unsafe or discourteous behaviors as a problem, reported number of visitors seen at the trailhead and on the trail, and demographics. On the HTMOS survey only, visitors were asked the number of times they were turned away because parking was full, if dogs interfered with their visit, to indicate the acceptable number of hikers and mountain bikers on the trail, and if they felt crowded by hikers and mountain bikers at the trailhead and on the trail.

Survey Administrators

All visitor study staff and volunteers attended a formal training to review procedures and protocols for survey administration. Survey administrators were issued a container of materials, including assigned surveys and a cover sheet to capture specific details about the shift (i.e., date, day of the week, shift time, location, etc.). At the Main and Soderberg trailheads, surveyors placed “Volunteers Surveying Ahead” signs 50 feet from the trailhead to encourage mountain bikers and trail runners to slow down. Every visitor who completed the survey were eligible to sign-up for a raffle for an annual park pass (one pass issued per season). Each surveyor was equipped with a county issued t-shirt and lanyard for identification. All volunteers were required to conduct their first shift with a staff member for guidance and support. Upon completion of each shift, the administrators clipped the completed surveys with the cover sheet and returned the container promptly back to staff.

Appendix F
Equipment Location Maps

HTMOS Equipment Locations

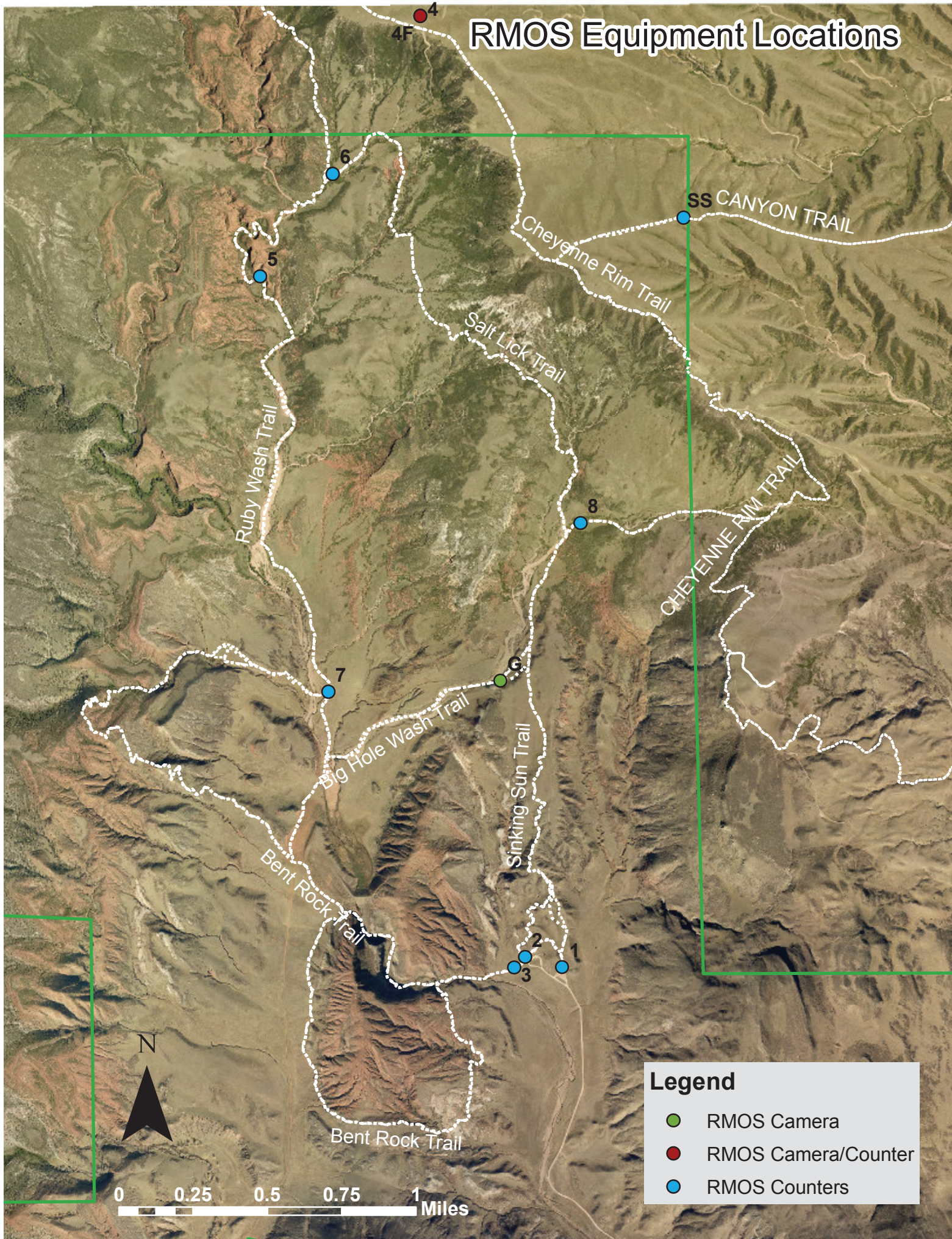


Legend

- Parking Lot Cameras
- HTMOS Cameras/Counters
- HTMOS Counters



RMOS Equipment Locations



HT Res. Equipment Locations

Foothills Trail

Foothills Trail

Legend

- HTMOS Cameras/Counters
- HTMOS Counters



Appendix G

Red Mountain Survey Comments

Red Mountain Open Space - Facility Rating Comments
a little wet
above what I'm used to finding especially being out of the way
Adequate and more
All above average
all around great place
all facilities were in great condition
all facilities were well maintained and nice
all looks great
all very nice
all well maintained
all were very good. clean. trails well marked
all worked very well, trains remain rustic
Although I didn't the restroom for relief, I did check inside for a hand sanitizer dispenser but found none. I would please request that one be installed and maintained
always enjoy
always have enjoyed this place, doesn't need improvement
area looked to be in good shape
awesome trip
Bathroom smelled very fresh and clean. Trails always well maintained
bathroom toilets get dirty fast
bathroom was clean but I've seen cleaner in parks, smooth road/plenty of parking, the trails were beautiful
bathrooms (one of them) was gross and unclean. everything else was awesome!
bathrooms were great, trails are well maintained
beautiful and easily accessible. trail well marked. good land info
Beautiful area, very clean friendly people
beautiful place, beautiful day, water feature great addition
Beautiful trails!
Beautiful trails, nice parking lot
Beautiful!
Because I can't think of anything I didn't like :)
because I'm a positive guy
Because they were good!
because they were very good
better marked
better than average experience
bird poop on picnic table
Clean
clean and neat
clean and organized
clean and well cared for
Clean and well maintained
clean facilities, minimal development on trail
clean restroom, good trail condition

Clean well maintained
clean, good trails
Clean, neat, cared for
clean, smooth trail
clean, well maintained
clean, well marked trails, good signs
Clean, well supplied, trails well defined and with very good trail junction info
clean, well-maintained
clean, well-maintained, user-friendly
Clean/well marked
compared to others I've seen
Compared to others they were well
Comparing them to other places that I've been
could be more trashcans along hike, everything else was above expectations
Could maybe be more/better signage where extra livestock trails are
Couldn't find trash can in convenient location to eating area
Covered picnic areas are great, could have better trail markers
Damage from cattle self-evident. Significant impacts along the Salt Lick and Cheyenne Rim Trails.
Did not use bathroom. Couldn't find trash
didn't have enough time to use all - will return
Easily and clearly marked. Liked the reference letter on sign post/map.
Equestrians off trail, ignoring barricades!
Everything I used was in good to excellent condition. Trails were a bit soft but that was expected
everything in great shape
everything is clean and in great condition
Everything is clean. Trails are well kept and well marked
everything is in good quality
Everything is in great condition. Shade awnings are nice and big.
Everything is wonderful
Everything looks great
Everything seemed really new and clean
Everything top grade. Well-marked trails.
Everything was clean and convenient
everything was clean and well maintained
Everything was great!
everything was great, haven't put anything in the trash yet
everything was great. excellent trail system
Everything was here that I needed and available to me
everything was in good shape
everything was in much better repair than i expected
everything was great. a couple spots on the trail had overgrown bushes making me nervous for snakes
Excellent condition
Excellent conditions, especially considering no day-fees

excellent day!
excellent facilities all around
Excellent park all around
excellent, helpful and friendly volunteers
exceptional
fabulous in every way. Dirt road to trailhead was well marked. good condition. trail well marked, stream crossings easy. lots of great information about geology...Thanks!
Fabulous panorama of hills
Facilities were good
favorite spot in CO
Generally, all good. Equestrians off trail.
get a recycle bin
Good = great
good signage, good condition
good surfaces
Good trail
Good trail decision and maintenance
great
great area!
great experience
Great for such a remote area
great marking on Bent Rock Trail
great overall experience
Great path and footage
great space!
great trail markings, well maintained trails, not crowded
great trail system and atmosphere for horse back riding. great trailer parking area
great, fun hiking and well kept trails
great, well marked trails
had a wonderful hike
hiking group will come back
i feel larimer county does a great job with open spaces
I got confused looking at the map but that's probably just me.
I lived here all my life and still love it
i love red mountain!
I love that there is designated horse parking
I love this place. It was magical
I thought everything was good. Some of the streams were hard to cross for my grandpa
I worry about our car being broken into; so well kept
I'm glad the kiosk and interpretive signs have good geologic information
Immaculate condition and well maintained. Informational.
impossibly nice views and hiking, but also nice to have good facilities
It appears to be a well kept recreation area
it is a good place to ride

it was all good, and no poop on the picnic tables
It's a nice place!
It's clean. Things are in good condition. I love that there are interpretive signs.
it's nice
I've been to other open spaces that were better - but I wasn't disappointed at all!
Just drove to see this place!
Kept well
k-lynn a bit overgrown
look great
looks very well kept!!
Lots of cacti encroaching on trail
love the views
love the views on this hike
love them. great upkeep
Love this area and the trails! Restrooms could use hand sanitizer :)
mainly, the trails are superb
mens bathroom out of TP
more trail markers
Most everything very clean and well marked, but I don't usually rate excellent
most trails marked very well except portions of ruby wash trail
mostly good - big wash hard to navigate gravel at times
muddy for mtn biking
muddy still
Natural beauty
neat as a pin
need more trails
need restroom by trailer parking area
nice facilities, would be good to have trash can near picnic table
nice maps and info, trails in good condition, parking area great but small
nice scenic hike
nice trails
Nice trails, good condition, beautiful scenery
nice trails, great scenery
nicely maintained trails
No complaints to report. Thanks for your hard work!
no TP
no trail maps today
nothing special about the parking lot, trails were perfect besides bugs, I wanted to see bigfoot
only horseback riding
Outstanding facilities for an open space
Overall a nice area to come to
overall everything is excellent. could use hand sanitizer in restrooms
Overall everything is very good. The only thing that could be better is some of the off shoots to the real trails
Overall very good experience

parking and trails are well maintained yet low impact
Rained this week
really impressed by conditions of this area
Red mtn facilities are always top notch
Red mtn is a great community resource!
Relatively clean restrooms, lots of parking, nice picnic areas!
restroom needs a little cleaning, trail is very easy for a flood area
restroom very clean and trails
Restrooms are not close enough to horse trailer parking. Need more trails
restrooms clean but no hand sanitizer
restrooms were very clean, parking is easy to access, trails are in good shape but could be more regularly marked
Sharing with men who miss toilet :(
should pop a trail on the side of big hole wash
slight confusion on Bent Rock signage
super kind volunteers, Cheryl and Anthony
the area is amazing
the area is very well maintained
the facilities are excellent
the facilities at the entrance were very nice. the trail was slightly overgrown with a few invasive weeds present. "dalmation toadlax, mullien, cheatgrass"
the facilities were about what I had expected (based on info from the web)
the facilities were clean and the trail is just plain fun
The fact that they are free and even accessible makes them so. Thank you!
The information boards could have more, if someone is bothering to read them they don't mind spending time to read
there is plenty of space to do recreation and not get in others way
the park is pristine
the park is well maintained
the restroom was just a little dirty, but the parking area, trails and kiosks were all in good condition
The restrooms were clean, parking lot well maintained
The road in is pretty wash boarded
the trails are somewhat primitive, but that is not necessarily bad
the trails were not marked very well and we felt lost at times, but the facility was beautiful
There was a mismarked trail sign on Bent Rock trail
these facilities are some of the best we have visited
they need to mark the trails better
they were all above average
they were all in very good condition
They were clean (restrooms) and parking was easy
This place is awesome!
This place is dope
top notch
trail was easy to follow and restrooms were clean and didn't smell
trails are clean and easy to get to

Trails are generally in nice condition
Trails are good, very scenic area, facilities up to date
trails are well maintained
Trails are well maintained as are facilities I used
trails do need more sign on where the trails are
trails easily negotiated
trails easy and maintained. love the educational info
trails generally well-maintained, very few obstacles or erosion problems
Trails maintained - very nice
Trails muddy as expected in spots. Filling form before going today (bathroom). Today parking full.
trails need some maintenance in spots
trails need to be marked better
trails were great it would just be helpful if they were more clear
trails wonder-cattle trails and old roads are direct, why change?
Trash free; clean
use more receptacles
very beautiful!
very clean
very clean and beautiful
very clean and easy to use
very clean and failed stink
very nice
very nice and well kept
Very well kept
very well kept, well designed train system
Wash trails are too soft for hiking - use social trails; bikes should be allowed on s. part of Bent Rock Canyon (same on Cheyenne Rim trail)
we had a great hike
We just enjoy being here.
well kept, beautiful area, few people, no dogs
Well made/maintained. Totally rad
well maintained
well maintained
Well maintained
Well maintained and clean
well maintained and clear trail markers
well maintained trails
well maintained, not crowded, different vistas than most NoCo spaces
Well-marked
Well-marked trails and direction to trailhead parking
well-marked, well maintained, clean
well-maintained
wish there were even more

Red Mountain Open Space - Additional Comments
1st time back since research projects before it was open to the public
Additional trail markers could be useful or maps at the trail markers. It was very beneficial having the brochure maps at the trail head. Having trailhead info farther away from the bathrooms, due to smell. Enjoyed use of covered picnic areas
beautiful area for a short beautiful hike
beautiful park. lots of bugs
beautiful space. different landscape than any other area i use for recreation
Beautiful spot!
bellfore ranch windmills north of border are a bad development. avoid cement guides in ground in horse trailer parking since horses are tied to the side. users are overall courteous. enjoyed the yak! looks overgrazed. small amount of noxious weeds.
Best state EVER!!
by pass trails for sand wash would be appreciated especially for biking. redevelopment of "straight" trail design would slow bikers down and create a more fun experience both up and down. thanks for what's here. has great potential
Cannot find info on park closer. We called park and all numbers with no info
Cattle cause significant damage to trails and adjacent resources.
cattle gone has improved the health of the prairie
Could use some big rocks to sit and enjoy the spot for a while
Enjoy all the county does to maintain and establish natural areas
family in Larimer County
First time here, it was very nice and we will be back
Glad to see you're surveying! Helps keep trails in great condition to best service everyone.
good wishes
great area
great experience! thanks
great grandeur
great hike
great hike, thanks!
Great hiking trail. They should mark the Wyoming border.
great locations
Great open space - will definitely come back!
great place
great place
great place
great place, really nice for a good/easy hike
Great place, really remote. Will come back often! Thanks.
great place, will be back :)
great spot, will be returning
have owned property in larimer county for 15 years
horsetooth open space is very crowded
I did not know a parking permit was required. i learned this from the volunteer today
i like the cows and horses

I like to wander off the trails, didn't know if I'd get in trouble
i love red mountain open space. i wish you allowed dogs
I really like that this is a dog-free area, please keep that rule in place
i really like the idea of the passport activity
I so enjoyed the silence today. The breeze in the grass, the song of the meadowlarks carried on the wind, the lack of human-generated noise. The colors of the rock contrasted the vivid colors of the new green plants reminds me of Georgia O'Keefe paintings.
I would love to see additional trails. I think there is plenty of opportunity.
I'm retired
it was awesome
it would be good to have a red mountain directions signage at the same place where the soapstone direction sign, thanks! good trails for mountain biking
Keep up the good work!
Long drive!
longer trails could be marked more regularly
love few bikers on trail. new gates are good-easier to open from horseback
love it every time i am here
love red mountain and devils backbone and horsetooth
love red mountain but don't tell anyone
Love the beauty and solitude of this area. The parking areas are well done, rarely too crowded, hope it stays that way. Very happy to share w/ multiple users as I'm also an equestrian. Would like to see another loop connecting to Soapstone?
love this area
lovely area
more trails please for horses
my family and i love this open space and have been very impressed with the trails. thanks!
My favorite place to hike, very special! Thanks you for sharing with the public
Need a map next time to take the 2 mi. loop at Bent Fork
need a sign "no bikers beyond"
Need more trails. Need restrooms at horse parking area
need some larger rocks at last stream crossing, road in is wash boarding
none great place!
one portion that i felt unsafe by people was by stone circle because it looked like someone was living in the old homestead. would like more notification on website if trails are closed.
Please keep and protect Larimer County's open spaces :)
please open sand creek to fishing
please use rock piles to mark the trails better. There were times when we were not sure of where to go
polaris school outing
Pretty, open/wide views, feel safe, easy for kids, well maintained
red mountain is great
Retired science teacher (earth sci/biology). Haven't hiked in a long time. Rode horses for many years and now travel by motorcycle - don't hike much.

signage is certainly helpful and educational, but sometimes not very specific and less educational than desirable. the anticline is super cool! We found this by Googling "cool geology hikes in Colorado"

so glad to have this area available. thanks for making it happen and it's upkeep

so many bugs, and I didn't find bigfoot

student at CSU

Thank you for allowing us to use this wonderful place.

Thank you for the great opportunities to enjoy our open spaces!

thank you for the water and coke! great volunteers!

Thank you! :)

Thank you! Great wildflower hike!

Thank you! we will be back!

Thank you! What a beautiful space.

Thanks for all you do!

Thanks for everything!

thanks for our public lands

Thanks for sharing great day!

thanks to volunteers and hikers/bikers for saving me from a near-death experience. thanks to my boyfriend, Steve, too

Thanks!

Thanks! :)

The geology is great!

the trail needs more signs sometimes we thought we were lost or didn't really know where we were

the trails were in good condition; however, the trails need to be marked more clearly between trailheads

Things seem clean and well maintained, plus a lot more trails than I expected. We will definitely be back!

This area is a gem.

this is a beautiful area

This is one of my favorite places on earth!

This was an awesome hike! I enjoyed seeing all of the flowers and mud swallows on the cliffs!

thoroughly enjoyed our visit, thanks!

Very cool park

Very Nice Park

very nice place to hike and enjoy nature

visiting from Arizona

VRA - off duty today

Washboard roads hard on horse trailers. I love this place!

we always enjoy hiking here

We are from Cheyenne

We are visiting from out of state

We love this trail!

we need trails without bikes. I've been knocked out when cyclists came at my horse head and i came off. had a concussion. horse is very quiet and trail savvy. bikes and horses should not mix

We really enjoyed coming here but would appreciate having more trails going to different parts of the property. Why is there no restroom facility at the stock trailhead? At the least, the restroom should be located midway between the 2 parking areas.

We really enjoyed our visit today!

Worth every penny!! Buy more land!!

Would like to see better signage on the trails - especially Cheyenne trail

Appendix H
Horsetooth Mountain Survey Comments

Horsetooth Mountain Open Space – Facility Rating Comments
I expect this park to be a 5 because of the cost of parking and the amount of use I get. I love it here!
1st visit!
a couple signs were missing
a trail map would be helpful for first time visitors
A trash can outside restrooms would be helpful
accessible, easy to see and find
According to current conditions
Adequate parking - clean, snow not a problem
All accessible
All great condition and in repair
all great!
All in great conditions
All in great shape and came earlier in the morning
all is good
all really good
All were excellent
Always a fun experience when we come out
always clean, readily available
Always enjoyed, no problems
always room for improvement
Amazing!
Ample parking
Area is well maintained, and trail is in good shape
Area seems well kept and accessible, clean area, helpful kiosks and well-marked trails
awesome park, great views
Awesome, well-maintained
Based off what I had experienced with
Bathroom and trash had been heavily used, but still acceptable. Water fountain is awesome!
Bathroom sink and no hand sanitation
Bathroom smelled nice and clean. Trails are beautiful
Bathroom was a little gross but everything else was great
Bathrooms
bathrooms always in great shape
Bathrooms could use a little cleaning. Otherwise, all good and well maintained!
bathrooms could use hand sanitizer
Bathrooms need TLC
bathrooms smell
bathrooms smelled weird but hike was very beautiful and well taken care of.
bathrooms were dirty
Beautiful park setting, the upkeep is fantastic
Beautiful, well maintained park
Because the place is awesome

Been on many, many trails, well maintained and signed!
better maps
broken dog water fountain
clean - kept up
clean and safe
clean and spacious
Clean spaces/not crowded
Clean, empty, beautiful trails
Clean, no trash on trail, easy to read signage, trails easy to follow
clean, not a single piece of trash on the trail
Clean, organized
clean, well maintained
Clear trails
Clear, clean.
Clearer trail maps
Clearly marked
composting toilets don't smell
couldn't have asked for more!
couldn't park at the trailhead
Cuz they were awesome!
Deadbolt on restroom broken
Did a loop hike including the Falls. Well maintained trails.
did not need to go
Did not see trash on trail
Did not use many facilities
Did not use most facilities. Some erosion on trails.
Drinking fountain not on
Drinking fountain not turned on
Drinking fountains never work and kiosk information wouldn't work today
drinking fountains turned off
drinking fountains were not working and parking had to be waited for
easy parking, nice trails
easy slow day
easy to hike and learn information
easy to use
Easy to use, beautiful views
Easy to use/understand, well-maintained
Enjoyed our visit
Enjoyed the hike. Maps were easy to read.
Especially the trash cans for pet waste - it's very good to have!
Everything was as expected.
every time I visit the facilities are in great condition
everything in top condition!
Everything is clean and well maintained. Great trails!

Everything is maintained
Everything is very nice!
Everything seemed just great. I just don't usually use the picnic area.
Everything seemed well maintained
Everything that I used today was in great shape!!
everything used exceeded expectations
Everything was clean
Everything was clean and clear and available
Everything was clean and well maintained
Everything was excellent!
everything was good
Everything was good, trails muddy because of rain
Everything was good. Just a little icy.
Everything was great!
everything was in good condition and enjoyable. the facilities we did use were excellent
Everything was in good shape
Everything was in great condition
Everything was lovely
Everything was pretty good
Everything was very clean!
Everything was very enjoyable
everything was very nice
Everything was well maintained
Everything we used was good, the drinking fountains did seem broken
everything is just fine
Excellent across the board!
Excellent conditions
excellent for a county-maintained property
Excellent up keep. Just need more trails and space to match demand
excellent!
facilities always clean and stocked
Facilities were clean and trail was well kept
Facilities were clean. Trails were well taken care of
facilities were pretty clean, parking easy to navigate, trash pile up started before noon + smell was already intense, helpful info, well groomed trails
Falls trail was in excellent condition
first time being here
For being a well-used space, it is well taken care of
Fountains on trails were awesome
Fountains were not on
fun and always reliable trail
Fun bike ride with kids
fun trail
good all-around experience

Good but muddy, nice trail improvements near HT Rock
Good condition
good day to hike overall
good experience
Good experience
Good overall conditions
good overall experience
Good place for dogs to drink
Good restrooms at trailhead - good to have any restroom! More parking needed :)
great
great area, well put together
great condition and good challenge
Great during the weekday, really pretty, less windy
Great except for all the dog poop bags littering trails
great experience
Great experience all around
Great fun on the trails
great hike (~8 miles), no issues on trail maintenance
great information, trails in great condition, easy to get to
Great job on all
Great keep up
great park
Great park - love the trails!
great park!
Great placement, clean, easy
Great trail for beginner mountain biker
Great trail, well-maintained
Great Trails
great trails and clean
great trails and signage
great trails close to home
Great trails in good condition - didn't see trash cans except parking lot
Great!
Great! Clean!
great! parking is the only issue ever
Great, no complaint
great, well-kept trails
Had a wonderful hike
had no issues
hand sanitizer in the restroom would be great
Horsetooth Trail is amazing!
Horsetooth Trails are well maintained and easy to run on
I almost couldn't find parking and that's why I rated it a 3
I couldn't find any trash cans anywhere on the trails

I didn't see a water fountain, only 1 trash can
I don't hike much.
I don't know the area well enough to give a better description
I got parking
I had a good visit and each of these things were helpful
I just needed the trails so didn't need the other stuff. Trails very good.
I like it, but like off trail hiking more personally
I live somewhere else. Visiting Fort Collins and coming here is awesome.
i love Horsetooth falls
I love this place
I rarely have had an experience on the trails that has been negative - a testament to an amazing County parks department
I think the parking lots and trails are in pretty good condition
I was impressed with the condition of the facilities! Nice and clean :)
i was pretty much just riding and i parked at inlet bay
Icy in parts
Icy trails
if it was possible to have any water options on the trail that would be good
In general, very good facilities for this activity
In some visits is not clean in the pass
Information of the trails were good and lots of amenities
It has been maintained
It has everything I need
It seemed the upkeep of this place is top notch. Very clean!
It was a fun hike
It was a muddy day
it was a very enjoyable day, everyone was friendly, and it was clean
It was all good that we used
it was great
It was very clean and easy to navigate
It well maintained
it's a great place plain and simple
It's amazing just get away into nature.
It's close and fun
it's great!
It's nice and a great place to walk the dogs
Just a clean, really cool place
Just a rough conditions day for the trails. Otherwise great.
keep costs down for everything
Kept up well
Kiosk didn't have great map
kiosk didn't provide info we wanted - historical info
kiosk maps should be replaced
Kiosks and signs were informative and helpful

Limited
Little wet today so I turned back, otherwise 5
Lot of poop bags on the trail due to lack of trash receptacles
Lots of bags with dog poop left on trail
Lots of break bumps, need more trails
Love it
Love it here.
Love it!
love the drinking water
Love the trails and facilities
Love the trails and parking was easy
Love the trails!
love the trails, well-marked, not over crowded at all
love this area
Love this park
Love this place :)
Love this place, Do NOT add more parking!
loved it!
more parking will be nice
More people every year but never more trails. We need more trails and water fountains.
more trash receptacles along the higher part of the trail would be nice
Mud, nature
My experience was great, no complaints
need more parking
need more signs along the way
need more trails
need more trash cans on trail
never used the restrooms but everything else is so good
Newer facilities, various trails
nice and clean all around
Nice area and well maintained
nice condition
Nice day!
Nice facility. Well managed.
Nice maps, trails were well maintained and clearly marked
Nice trails - no falls today
No complaints
No complaints with what I used
No hand sanitizer
no issues
no mile markers or in-depth info on trail direction
No problem parking and the trails were in great shape!
No problems at all
No problems, first class!

normal restroom issues, trails uncrowded and in good shape
Not enough jumps on the trails
Not enough trash cans - 1 more midway would be great
Nothing was exceptional but it wasn't a bad visit!
nothing's perfect but it was very close
one thing that bothered me was the lock on the restroom at soderburg was broke all summer
Only biked. Trails were a big rutty
only drawback was full parking
only suggestion is to put sanitizer in the restroom
open parking, consulted map for plan
Our favorite Hike!
overall good experience
Overall great place and facility
overall well kept
overall well taken care of
Parking area always clean and well-manned Trails well-maintained
parking areas-hard to find a space on holidays
Parking easy in and out/clean trails well maintained
parking for an hour hike is a little expensive
Parking is perfect. Lots of people stay off trail. Social trail
parking limited in spaces
parking lot is too small
parking lot was full
Parking lot was lousy, trails were muddy
parking lots well taken care of, safe trails, signs could be clearer to indicate how to get to Horsetooth rock
parking machine broken, cc reader at office broken
parking sucked
parking was easy and the trail was well marked
Parking was easy, the trails were great (conditions, no trash, not washed out, etc.)
parking was expensive
Parking was good! Trails were well kept
Parking was very open, and trails were well maintained
parking well designed. tower road is getting very rocky
Picked up 4 bags of dog poop on Swan Johnson - all were fresh
Plenty of parking today, and the trails are in great shape!
Poor parking - great trails!
pretty good overall, a little muddy
pretty well-maintained park
Previously, outside of the last 12 months, we have been turned away because lot/trail was full. Amenities are always great.
Public restrooms are always somewhat iffy. Trails and info were great! I never got lost
rated by what we used - it was great!
Really enjoyed the park, restrooms were dirty but that's expected
restroom cleaner than sometimes, trails in good shape

restroom had great paper abundance, but no sink; lots of parking
Restroom was a little dirty
Restrooms are always very clean, and trails are in great condition
Restrooms are gross. If practical, would like the trash bins a little farther down the trail (especially for the falls trail) to dispose of dog waste and not have to carry it.
restrooms clean and well supplied, parking easy to access and accommodating
Restrooms just cleaned and mopped -> the rest of the 5's are always this way for me when I visit
Restrooms just eh
Restrooms need cleaning soap or hand sanitizer
restrooms need hand sanitizer
restrooms need hand sanitizer (please)
restrooms need hand sanitizer, drinking fountain not working
Restrooms needed the holding tank emptied
restrooms smelled bad
restrooms unclean
Restrooms usually need some work
restrooms were clean/trail was clean and quiet
satisfactory
Seemed comparable to other trails/trailheads
sept 26 @ 6:30 - best conditions / best time of year (not crowded)
Short 2 hr. hike limited exposure to resources
smell/used today but fairly clear. Marathon day. Thanks
so well kept
Soderberg lot hasn't been full since horse trailer addition
Some erosion on trail, otherwise perfect
Some trails are dry and washed out
some trails would be hard for inexperienced hikers or children
Spring Creek Trail closure needs to be marked on the map! Encountering it added 3 miles to our trip and we ran out of water in 90+ heat
stuff was good, thanks!
such an enjoyable and well-mapped place
the bathrooms didn't have hand soap, parking is consistently full, kiosk maps are too detailed and aren't clearly labeled for just this site
The dog fountain and the pop-up feature were very nice
the facilities are really well maintained
the facilities were in great conditions during our visit
The kiosk info is excellent, I just don't need it. The restrooms are the cleanest pit toilets I have ever encountered. Parking can sometimes be full, but today was not
The parking and trails were awesome. We did not use anything else today
The parking lots could be bigger, but trail is always nice
the picnic areas and parking were really nice, but the bathrooms could use some hand sanitizer
The picnic areas should have umbrella over them. Bathroom doesn't have flush
the trail is smooth and well put together
the trail was clear and well-marked

the trails are better than some we've seen, but not perfect
The water fountain wasn't working
There are few too parking spaces
there are no signs for how to get to different areas
There could be more trash cans
These facilities are well maintained, and everything is very clean
They all worked well
they awesome
They met all my expectation
they met expectations
they were all functional and clean
they were all sweet
they were awesome!
They were good but I've seen better
they were great!
they were in good condition
They were ok
they were satisfactory
they were some good facilities
They were very good
They're great as usual
They're nice
This is a good place comparing apples to apples
This is a wonderful, clean park
This is how I experienced them
toilet is good for a public park, but by no means good or very good-everything else is very good
too many people
too much horse waste on trails. horses should not be allowed
trail is amazing, restroom is fine
trail marked easy, felt it was moderate at times
Trail near the Horsetooth Rock needs work
trail needs more trash receptacles
Trail restrooms are always kind of smelly
Trail was great!
Trail was in very good shape and, with my early start, uncrowded
Trails a little muddy today
trails and facilities were well maintained
Trails are good, but are crowded; need more trails
Trails are good. Keep wathen, mill, sawmill difficult!
trails are great! always disappointed when the car lot is full with an empty horse trailer--could use more parking
trails are rough due to traffic but that is expected
trails are washed out; the building could be better
Trails are well marked - a bit rocky but then it is a rock mt.
trails are well taken care of/groomed - parking was easy; not crowded

trails can always be improved
trails in good shape but dry
Trails snowy
trails well maintained and marked
Trails were at times a little unclear - drinking fountains are chilled! :)
trails were clear and easy to use, parking was easy
Trails were great, no issues w/ anything.
Trails were icy
Trails were littered, restroom very dirty, parking and trash as expected
Trails were muddy
Trails were really well maintained and marked, great hiking!
Trails were well marked and clean. Drinking fountains were fine, parking too
Trails would be a 5 with directional mountain bike only trails
Trails, more single use, downhill/jump specific, one way
trash on trail a lot
Trash receptacles one not enough
Usually parking is amazing. Today was first day we were ever turned away.
Very accessible. Beautiful.
Very clean
very clean and beautiful and easy to navigate!
very clean restrooms, great parking
Very clean with lots of amenities
very clean, trail easily marked
very few people, views are awesome, trails are plenty wide
Very good experience
very good facilities and amenities but drinking fountain was off
Very good, a little crowded
very nice
very nice accommodations
very nice and maintained well
very nice area to hike
Very nice trail and well-marked and safe
very nice trails
Very nicely maintained
very satisfied
very satisfied with trail markers
Very well - maintained trail system!
Wanted to refill water bottle, but fountain was not working
was great
Water fountain at trailhead wasn't working - nicely maintained trails
water fountain wasn't on today
Water was off
We do one thing; run Towers Rd
we don't have all this back east!

we enjoyed our visit and the restrooms were clean
we found trash bins only at the start of the trail, it would be good to have more
We had a good time
We love the water access in the park, trails are great, a little more bike focus would be awesome!!!
we were here early, and things were fresh
We were very pleased with this park and would love to visit again
weekday
well cared for
Well kept
Well kept, clean
well kept, not incredible though
well maintained
Well maintained - only need is more parking!
well maintained and fun
well maintained trails, bathrooms smelled nice
Well maintained, clean
well-marked and maintained
Well-marked and maintained trails
well-kept trails with great facilities
What I used was good to very good. Very happy with it
zero issues