


# Increased Flood Potential of Streams Draining the High Park Fire

with ratios of predicted post/pre fire peak flows for the 1-hour, 25-year rain event (1.8 inches, 46 mm)

Example: for Rist Canyon at point RC-4, the peak flow ratio = post fire peak flow / pre fire peak flow = 1710 cfs / 550 cfs = 3.1

September 2012



U.S. Department of Agriculture  
Natural Resources Conservation Service

0 1 2 Miles

0 2 4 Kilometers

1:30,000

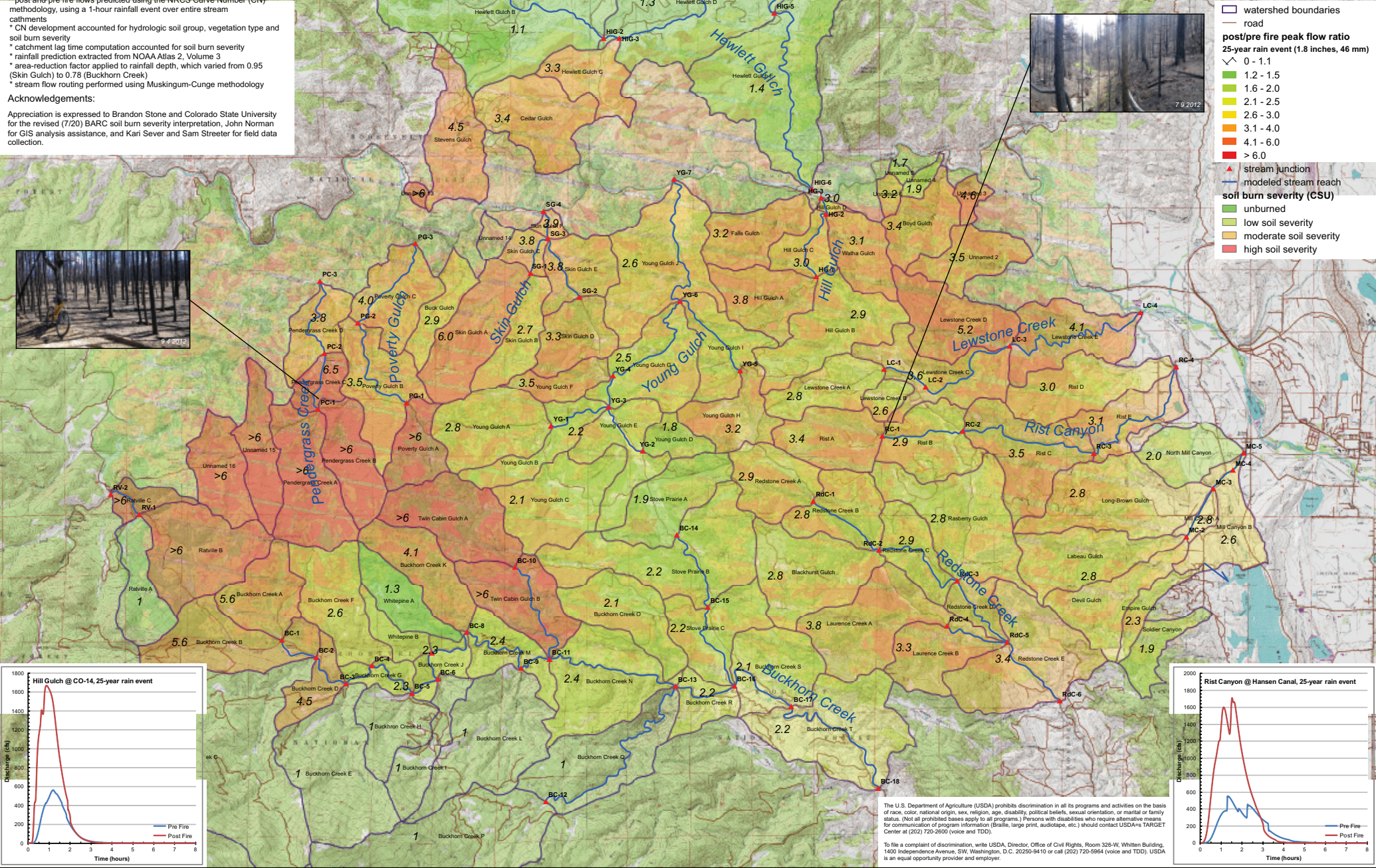
Steven E. Yochum, PhD, PE  
Hydrologist, NRCS Colorado State Office

**Methods:**

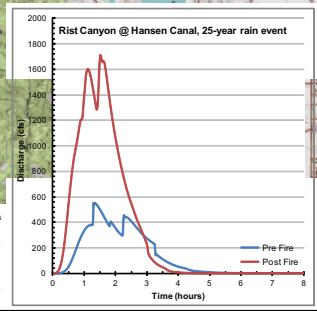
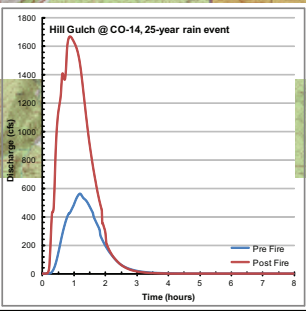
- \* post and pre fire flows predicted using the NRCS Curve Number (CN) methodology, using a 1-hour rainfall event over entire stream catchments
- \* CN development accounted for hydrologic soil group, vegetation type and soil burn severity
- \* catchment lag time computation accounted for soil burn severity
- \* rainfall prediction extracted from NOAA Atlas 2, Volume 3
- \* area-reduction factor applied to rainfall depth, which varied from 0.95 (Skin Gulch) to 0.78 (Buckhorn Creek)
- \* stream flow routing performed using Muskingum-Cunge methodology

**Acknowledgements:**

Appreciation is expressed to Brandon Stone and Colorado State University for the revised (7/20) BARC soil burn severity interpretation, John Norman for GIS analysis assistance, and Kari Sever and Sam Streeter for field data collection.



watershed boundaries  
 road  
**post/pre fire peak flow ratio**  
**25-year rain event (1.8 inches, 46 mm)**  
∨ 0 - 1.1  
 1.2 - 1.5  
 1.6 - 2.0  
 2.1 - 2.5  
 2.6 - 3.0  
 3.1 - 4.0  
 4.1 - 6.0  
 > 6.0  
▲ stream junction  
— modeled stream reach  
**soil burn severity (CSU)**  
 unburned  
 low soil severity  
 moderate soil severity  
 high soil severity



The U.S. Department of Agriculture (USDA) prohibits discrimination in all its programs and activities on the basis of race, color, national origin, sex, religion, age, disability, political beliefs, sexual orientation, or marital or family status. (Not all prohibited bases apply to all programs.) Persons with disabilities who require alternative means for communication of program information (Braille, large print, audiotape, etc.) should contact USDA's TARGET Center at (202) 720-2600 (voice and TDD).

To file a complaint of discrimination, write USDA, Director, Office of Civil Rights, Room 326-W, Whitten Building, 1400 Independence Avenue, SW, Washington, D.C. 20250-9410 or call (202) 720-5964 (voice and TDD). USDA is an equal opportunity provider and employer.